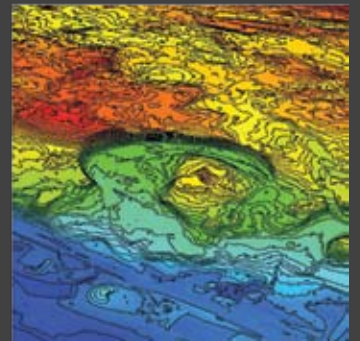


# AERO-METRIC



Company Overview

With six production offices spanning from Alaska to Virginia we have the geographic reach to support projects in any part of North America.

Give us a call and see why clients in government, engineering, and industry trust us year after year with their mapping needs.



Aero-Metric is one of the largest, and most experienced, full service geospatial consulting firms in the nation. Our client base includes many of the top North American engineering and industrial firms, as well as a host of federal, state, and local government agencies.

Aero-Metric provides a comprehensive range of aerial mapping and GIS services including the latest in airborne lidar and digital imagery acquisition, satellite imagery, GPS survey and ground control, planimetric and topographic mapping, lidargrammetry, elevation modeling and analysis, digital orthophoto processing, image processing, 3D simulation models, fly-throughs, remote sensing, and quality assurance and control services. Aero-Metric's services are used by our clients in feasibility studies, infrastructure mapping, engineering design and construction, temporal change detection and assessment, homeland security, emergency response, and many other applications.

### Background

Aero-Metric has built enduring client relationships based on consistent quality service and the combined experience of the following firms whose roots date back more than eight decades:

- Aero-Metric Engineering, Inc., Sheboygan Wisconsin, Founded in 1969.
- AeroMap U.S., Anchorage, Alaska, Founded in 1960.

- Walker and Associates, Seattle, Washington, Founded in 1953.
- Air Survey Corporation, Dulles, Virginia, Founded in 1946.
- MARKHURD, Minneapolis, Minnesota, Founded in 1922.

All the original companies have been working under the same ownership since 1993. The group was rebranded as Aero-Metric, Inc. in 2006.

### Technical Excellence

Aero-Metric has the experience, technical expertise, and depth of staff resources to enable excellent performance on challenging projects from multisensor geospatial data fusion for small site mapping to state-wide imagery acquisition programs. Our staff includes surveyors, pilots, engineers, and photogrammetrists, as well as mapping scientists and GIS specialists working from six production offices.

A pioneer in the use of color aerial photography, digital photogrammetric mapping, lidar, and airborne multi-spectral sensors Aero-Metric remains committed to technical excellence and is working with clients to explore emerging sensors and platforms, Open Source and web 2.0 technologies, and neogeography platforms such as Google Earth®.

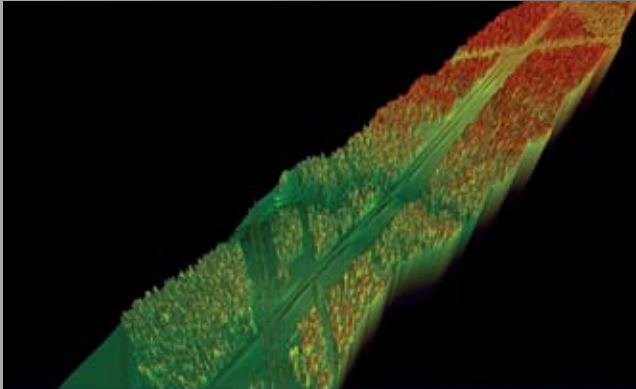
*For over eight decades, Aero-Metric has been committed to technical excellence.*



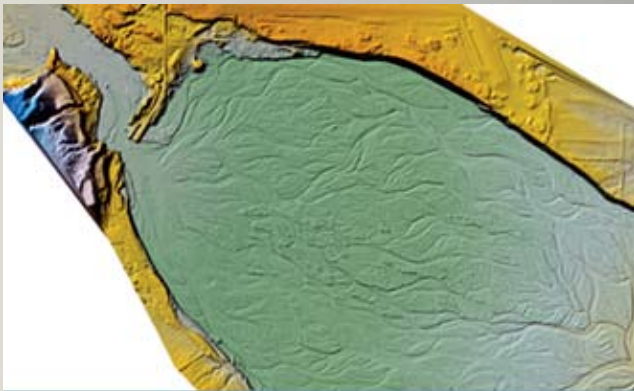
# Tailored Mapping Solutions



Mines / Landfills



Pipelines / Transmission Lines



Floodplains / Coastal Areas



Airports / Ports



Transportation



State / County / City



## Services

- |   |   |
|---|---|
| <b>Imaging &amp; Elevation<br/>Data Acquisition</b> | <ul style="list-style-type: none"> <li>• Aerial Photography</li> <li>• Digital Aerial Imaging (Zeiss Digital Mapping Cameras)</li> <li>• Lidar Point Cloud Acquisition</li> <li>• Low Altitude Photography</li> <li>• Ground Control (GPS)</li> <li>• Satellite Imagery</li> <li>• Photographic Reproduction</li> <li>• Historical Photo Archive</li> </ul> |
|---|---|

- |                                |  |
|--------------------------------|--|
| <b>Photogrammetric Mapping</b> | <ul style="list-style-type: none"> <li>• Digital Mapping (Stereo Compilation / Feature Extraction)</li> <li>• Digital Terrain Mapping / Lidar Processing</li> <li>• Lidargrammetry</li> <li>• Digital Orthophoto Processing</li> </ul> |
|--------------------------------|--|

- |            |   |
|------------|---|
| <b>GIS</b> | <ul style="list-style-type: none"> <li>• Data Capture / Conversion</li> <li>• Database Design</li> <li>• Application Development</li> <li>• Interactive Map Publishing</li> </ul> |
|------------|---|

- |                   |  |
|-------------------|--|
| <b>Simulation</b> | <ul style="list-style-type: none"> <li>• 3D Modeling</li> <li>• Flythrough Generation</li> </ul> |
|-------------------|--|

- |                           |  |
|---------------------------|--|
| <b>Program Management</b> | <ul style="list-style-type: none"> <li>• Project / Program Management</li> <li>• Quality Assurance and Quality Management</li> </ul> |
|---------------------------|--|

Regional Offices		
Alaska Region	907.272.4495	Anchorage, AK
Central Region	920.457.3631	Sheboygan, WI
Eastern Region	703.471.4510	Dulles, VA
Midwest Region	763.420.9606	Minneapolis, MN
Mountain Region	970.226.2883	Fort Collins, CO
Western Region	206.244.2300	Seattle, WA

Satellite Offices		
Alabama	256.325.9127	Huntsville, AL
Missouri	913.310.0567	Kansas City, MO
New Mexico	505.883.0399	Albuquerque, NM
New York	585.319.4068	Rochester, NY
Oklahoma	918.398.4477	Tulsa, OK
Texas	972.931.6410	Dallas, TX
Virginia	757.463.9500	Virginia Beach, VA

Aero-Metric and the Aero-Metric Logo are trademarks of Aero-Metric, Incorporated.  
All other trademarks are the property of their respective owners.