



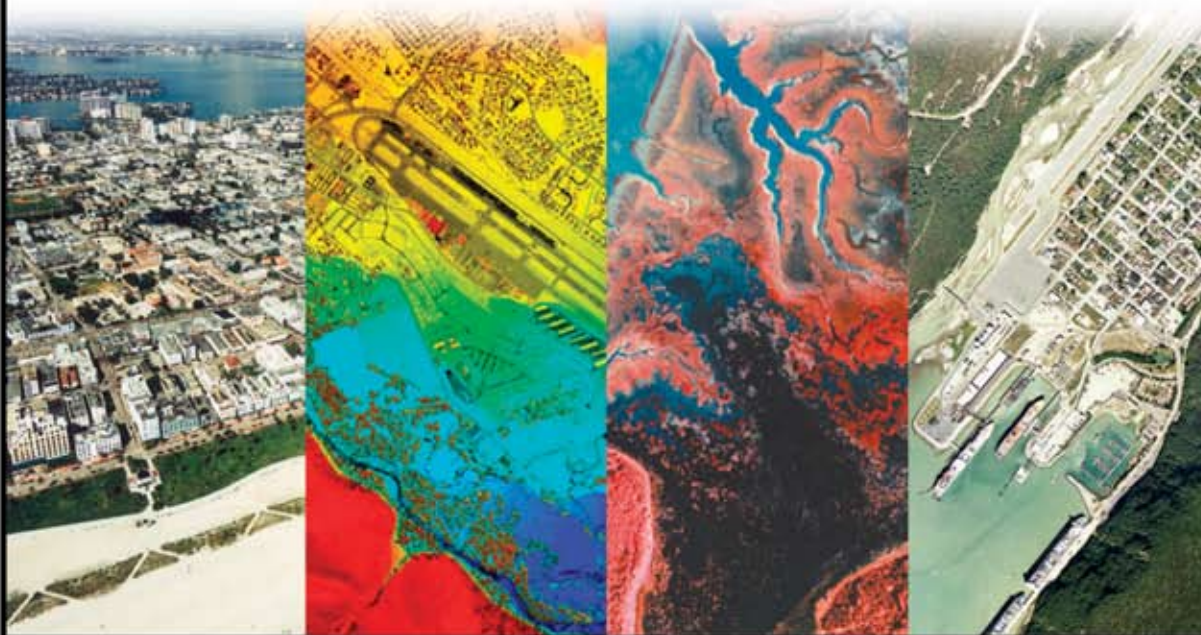
AERO-METRIC

ANCHORAGE DIVISION

From data acquired using land, airborne and satellite sensors, we define the earth's topographic shape, identify and measure its natural and man-made features, and chronicle its condition. We can customize geographic information to meet your needs whether you are an individual, energy company, engineering or environmental consultant, governmental agency or world organization. Our Alaskan Spirit and a willingness to try creative solutions guide us in meeting our clients' needs on both routine and complex projects. AERO-METRIC's Anchorage office has been serving Alaska for over 40 years. Contact us at AERO-METRIC for all your geospatial data needs.

907-272-4495 • www.aerometric.com

2014 Merrill Field Drive, Anchorage, Alaska 99501



Aerial
Photography

LIDAR

Remote
Sensing

Satellite
Data

Photo Lab

Image
Library

Topographic
Mapping

Orthophotos

Image
Analysis

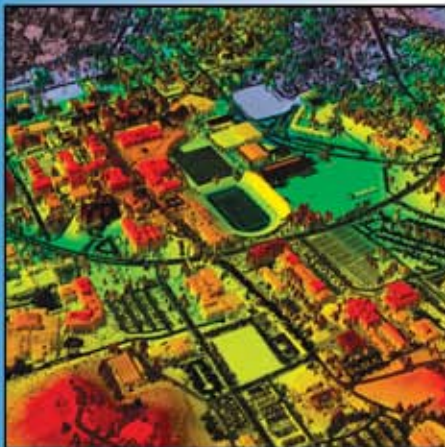
Data
Conversion

GIS Data
& Services

IFSAR/Radar



NEW!
King Air Turbine Aircraft



A Fleet of Four Aircraft

AERO-METRIC's team of experienced flight crews and support staff works with the latest equipment and a fleet of four twin-engine aircraft. We are pleased to announce the addition of our new King Air turbine aircraft which will allow faster flights at higher altitudes.

Film Library

Our Anchorage office boasts a film library containing over one million images documenting Alaska communities including Anchorage, major transportation corridors, major events, and normal growth and development. Imagery is available in many formats including digital mosaics and orthophotos and full color printing.

Topographic Mapping & LIDAR

AERO-METRIC utilizes both softcopy and analytical stereo-plotter systems to extract planimetric and topographic information from aerial photographs. In addition, we currently have the only airborne LIDAR sensor based in Alaska. LIDAR technology offers one of the most accurate, expedient and cost-effective ways to capture wide-area elevation information to produce highly detailed Digital Elevation Models (DEMs).

AERO-METRIC appreciates your business.

**Please contact us for assistance
with geospatial data for your projects!**

AERO-METRIC

AERO-METRIC, Inc., a privately held corporation with offices throughout the United States. Office locations include: Anchorage, Alaska; Fort Collins, Colorado; Minneapolis, Minnesota; Kansas City, Missouri; Albuquerque, New Mexico; Dallas, Texas; Dulles, Virginia; Virginia Beach, Virginia; Seattle, Washington; Chilton, Wisconsin; and corporate headquarters in Sheboygan, Wisconsin.